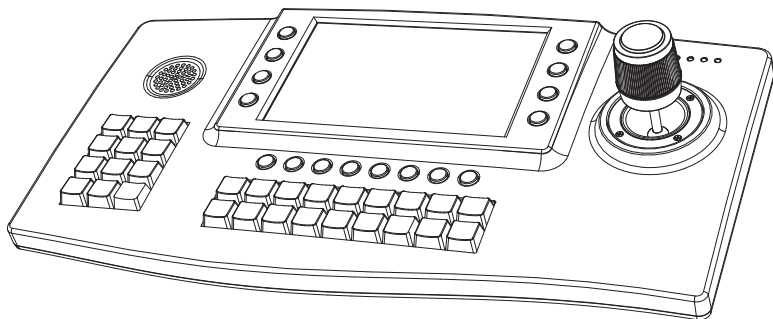


IP KEYBOARD CONTROLLER

USER INSTRUCTION

USE/INSTALLATION



Preface

Thank you for purchasing our products, and if any questions or needs, please contact us. This product is specially for multi-IP PTZ dome cameras realize unified control and R&D (Research and developed) IP keyboard controller in the same (LAN) .This equipment adopts ONVIF protocol to start communication, connection, and control ...etc, which apply in most of industries, can compatible with different kinds of IP PTZ cameras. Embedded Web Server, it can support user through browser. Easy operation and maintenance for products. In order to suit many different operate systems, This products Support all of main browsers ,such as Internet Explorer, Firefox, Chrome, Safari...etc.This keyboard is with 7" HD monitor, support 4CH image display, support 1ch 1080P decoding. Support HDMI HD output; 4D Japan-original joystick, with very completely operation. Can work perfectly away from PC and monitor, realized the central-controlling turely.

It can be applied to installed for multi-places, such as school, hospital, hotel, factory, workshop, etc.It makes the switching much easily and quickly between the equipment.

Before installation,please check whether all the accessories are complete.If missing any packing accessories .Please contact local distributor in time.

Packing List

| | |
|----------------------------------|-----------|
| Network Keyboard mainframe ----- | one piece |
| Power Adapter ----- | one piece |
| Network Cable ----- | one piece |
| CD ----- | one piece |
| Quick Operation Guide ----- | one piece |
| Certificate ----- | one piece |
| Warranty Card ----- | one piece |

Statement

Contents described in this manual may differ from the version you are currently using, if you are in doubt when using this manual, please contact our technical support for help.

The manual will be updated from time to time, and the company has reserved the right without notice.

| | |
|---------------------------------------|-----------|
| 1. Product Description | 3 |
| 1.1 Application | 3 |
| 1.2 Product Features | 3 |
| 1.3 keyboard interfaces | 3 |
| 1.4 Wiring diagram | 3 |
| 1.5 Technical specification | 3 |
| 1.6 Key instruction | 3 |
| 2. System setting | 6 |
| 2.1 Language setting | 3 |
| 2.2 Time setting | 3 |
| 2.3 IP time check | 3 |
| 2.4 System Upgrade | 3 |
| 2.5 Restore Defaults | 3 |
| 2.6 Version Information | 3 |
| 3. The internet | 8 |
| 3.1 The internet | 8 |
| 4. PTZ Setting | 9 |
| 4.1 PTZ Setting | 9 |
| 5. IPC device information | 9 |
| 5.1 IPC device information | 9 |
| 6. Device Management | 10 |
| 6.1 Connection | 10 |
| 6.2 Adding | 10 |
| 6.3 Delete | 11 |
| 6.4 Modify the user name and password | 12 |
| 6.5 Inquire | 12 |
| 6.6 Switching | 12 |
| 7. Feature set | 13 |
| 7.1 Language setting | 13 |
| 7.2 Time setting | 13 |
| 7.3 IP time check | 14 |

1. Product Description

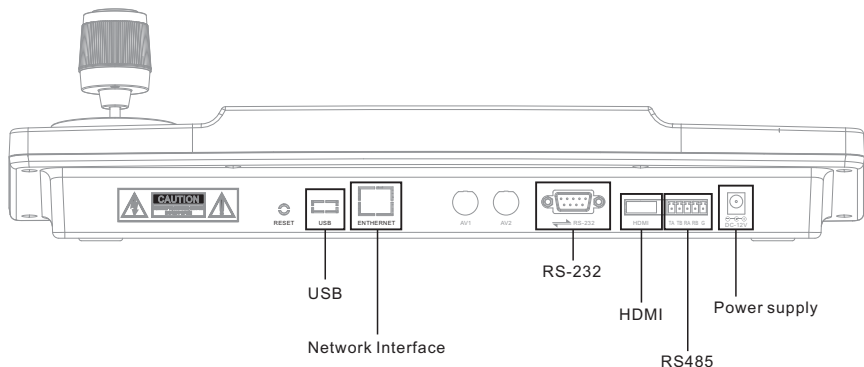
1.1 Application

This keyboard can play the role of the IP control center in monitoring project, can control the PTZ Camera, previewing the image. It supports four simultaneous screen preview, and can support one channel image up to 1080P resolution previews. Simple configuration interface, easy to get started, just a few steps can achieve to previewing and control the IP PTZ Cameras.

1.2 Product Features

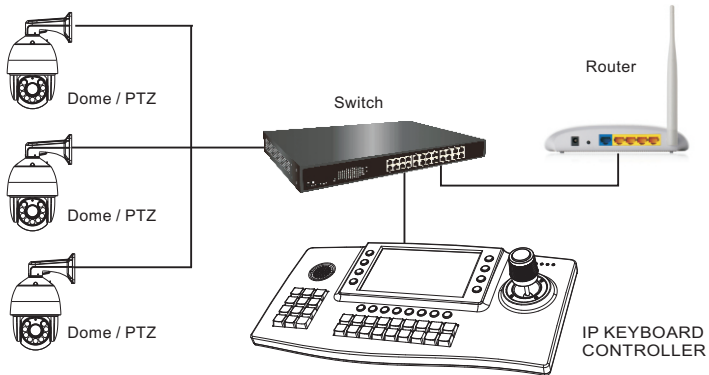
- 7 inch, 800X600 resolution TFT LCD display 4D joystick.
- support controlling PTZ, preset, Patrol, scan configuration, Independent wipers, Light shortcut keys.
- Support Onvif, Support many famous brand IP PTZ Coding.
- Support outer-connected display equipment (HDMI connector).
- Support USB mouse operation.

1.3 keyboard interfaces



1. Product Description

1.4 Wiring diagram

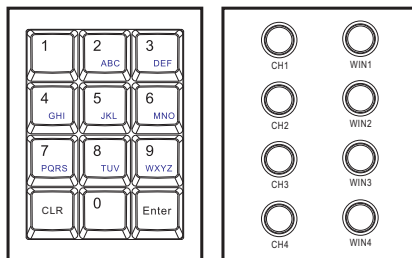


1.5 Technical specification

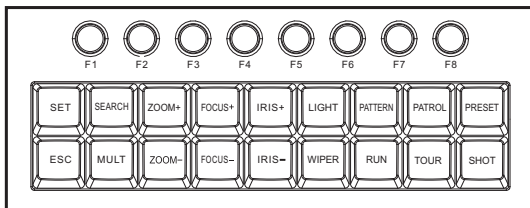
| | |
|----------------------|---------------------------------|
| RS485 | 1PC 3. 81 pin, TA, TB |
| RS232 | 1PC DB9 Port |
| Ethernet | 1PC Ethernet, IEEE 802.11 b/g/n |
| USB port | 1PC USB Port |
| HDMI | 1PC HDMI Port |
| Protocol | Onvif , Can be customized |
| Operating lever | 4D joysticker |
| LCD | HD 7" monitor |
| Working Temperature: | 0°C~55°C / 14°F~131°F |
| Working humidity: | 20% -80% (frostless) |
| Storage Temperature | -10°C~60°C / 14°F~140°F |
| Storage Humidity | ≤90%RH(frostless) |
| Power Supply | DC12V2A |
| Dimensions | 490x265x170 (mm) |
| Product weight | 3kg |
| Certificate | CE、FCC、RoHS |
| Warranty | One year |

1. Product Description

1.6 Key instruction



| CLR | CH1 | CH2 | CH3 | CH4 |
|---------|-----------------------------|-----------------------------|-----------------------------|-----------------------------|
| Clear | NO.1 window in full display | NO.2 window in full display | NO.3 window in full display | NO.4 window in full display |
| Enter | Win1 | Win2 | Win3 | Win4 |
| Confirm | Select the No.1 window | Select the No.2 window | Select the No.3 window | Select the No.4 window |

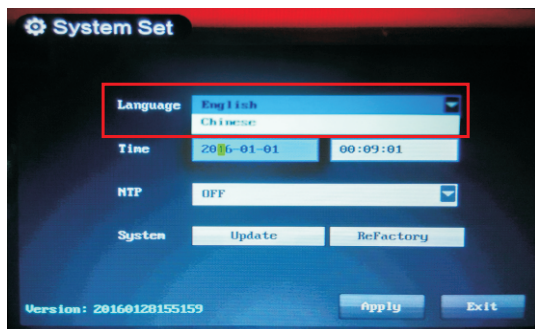


| SET | SEARCH | ZOOM+ | FOCUS+ | IRIS+ | LIGHT |
|-----------------|-------------|----------------|-------------|----------------|-------------|
| Set | Inquiry | Zoon in | FOCUS+ | IRIS+ | Light |
| ESC | MULT | ZOOM- | FOCUS- | IRIS- | WIPER |
| Back | Mult | Zoon out | FOCUS- | IRIS- | Wiper |
| PATTERN | RUN | PATROL | TOUR | PRESET | SHOT |
| Setting Pattern | Run Pattern | Setting Patrol | Call Patrol | Setting Preset | Call preset |

2.1 Language setting

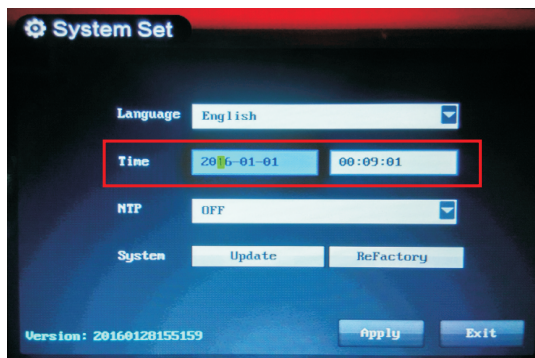
On the keyboard, press the "SET" key to enter the menu, select System Settings press "ENTER" to enter the main menu, move the joystick to select the language drop-down box. After selecting the appropriate language selection application, you will be prompted to restart the device.

Attention: just support Chinese and English Selection.



2.2 Time setting

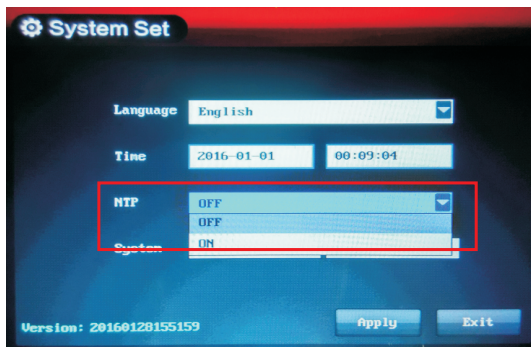
Select the time bar on the numeric keyboard input directly, enter the finished press "Esc" key to return to, and then select [Application], press "enter" on the keyboard OK.



2. System setting

2.3 IP time check

When selected time check, move the joystick up and down to select the [open] or [Off], after selecting, then application.

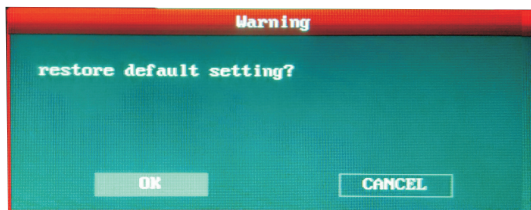


2.4 System Upgrade

When you upgrade, you need to create the update folder in the U disk , and copy the update files to this folder, if more than one upgrade file, please keep the most recent file, delete the others. Insert the keyboard's USB port, and then select the upgrade, press "enter" key to confirm, the device will automatically reboot after the upgrade is complete.

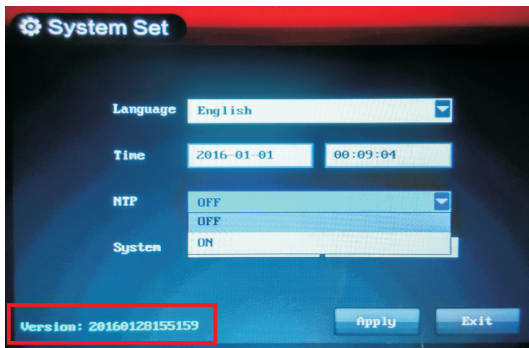
2.5 Restore Defaults

Find the [Restore Defaults] in the main menu, press the "Enter" key to select the recovery. Warning dialog box, choose the OK to restart the device begins to recover.



2.6 Version Information

In the lower left corner of the keyboard on the main menu ,you can see the current version of the device information

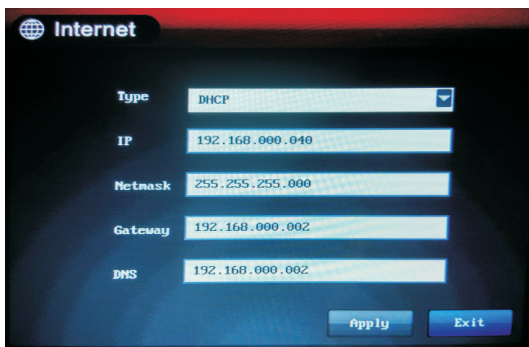


3. The internet

3.1 The internet

Type where you can modify the IP acquisition mode.

Note: DHCP requires the router has DHCP function and Turn on function.

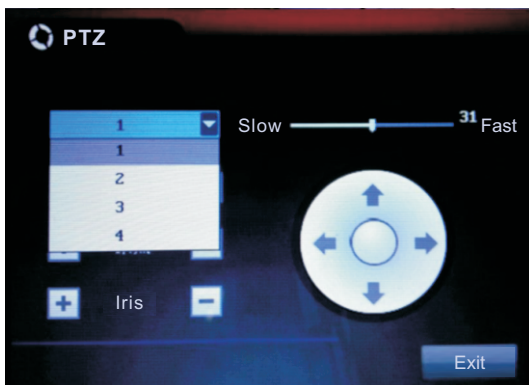


4. PTZ Setting

4.1 PTZ Setting

There are three ways to achieve PTZ control

- 1、with CH1, CH2, CH3, CH4 direct single-screen preview, use the joystick to control up/down, left/right, zoom in/out ...etc.
- 2、When in 4 screens, selecting the appropriate window by WIN1, WIN2, WIN3, WIN4 , and then use the joystick to control.
- 3、Enter the PTZ setup menu to select the appropriate window controls. (PTZ settings in slow, fast function keys reserved for future use)



5. IPC device information

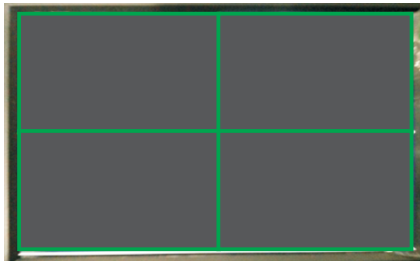
5.1 IPC device information

Has added device will appear in the inside, turned on the following play "√", will preview screen. You can modify the following options in the user name, password, delete, search, save with the exit.

6. Device Management

6.1 Connection

6.1.1 Connected power cable well, and connect the network cable. After the startup is completed, quad screen will display on the screen.

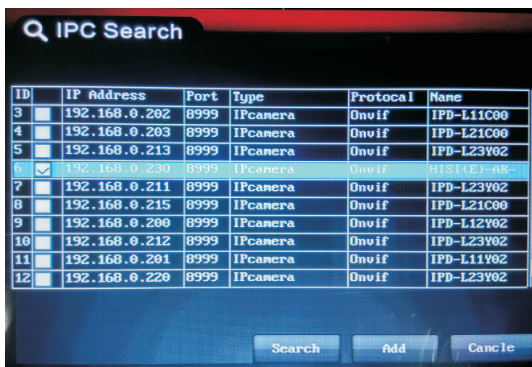


6.2 Adding

6.2.1 Press "SEARCH" button to enter the [IPC SEARCH] page, operate joystick to select "SEARCH", Press "Enter" key on the keyboard to confirm.

6.2.2 Search the LAN IP address, use joystick up or down to select and add the PTZ Camera you want.

6.2.3 Select the IP address of the PTZ Camera, press "Enter" key to confirm, the IP address will be ticked after confirmation. Then operate the joystick to right twice time, select the menu [Add] Press "Enter" key. After adding success will prompt "added successfully, modify the user name and password into" press "Enter" key.



6. Device Management

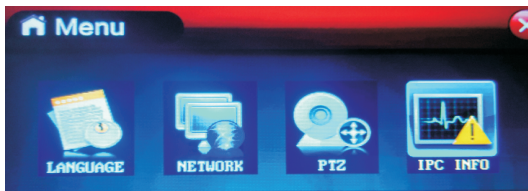
6.2.4 After the addition is complete, operate the joystick to right to select [Exit] and press the "Enter" key to confirm the exit to the [information] IPC device interface.



6.2.5 Select the just added device press "Enter" to confirm to open, and then save and exit. The added ptz camera image will appear on the quad screen.

6.3 Delete

6.3.1 Press the "SET" key to enter the main menu, operate the joystick 3 times right to select [IPC information] , Press again "Enter" key to enter information [IPC] sub menu.



6.3.2 Select the IP address of the device you want to delete, operate the joystick right 3 times to select the delete key on the screen, press the "Enter" key on your keyboard to confirm the deletion. After the removal is complete, select Save, press "Enter" key on your keyboard to determine the save.

6.4 Modify the user name and password

6.4.1 Enter the [IPC device information] sub-menu, select the IP address of the device you want to modify , press the "Enter" key to confirm, move the joystick to the right and select the interface to modify user name or password.

Note: If punctuation and other symbols, adjustment shall be set exhaled key soft keyboard input.

Select  to switch input methods.



6.5 Inquire

Press the "SET" key to enter the [Menu] interface, move the joystick to the right three times, select [IPC Information], then press "Enter" key on the keyboard to confirm, enter the [IPC information] sub-menu , check the device information saved.

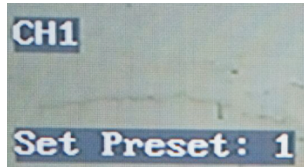
6.6 Switching

6.6.1 You can choose to switch the screen to be controlled by WIN1, WIN2, WIN3, WIN4 four buttons. You can also zoom the single-screen by CH1, CH2, CH3, CH4.(Four)、Function setting

7. Feature set

7.1 Preset setting and Shot

7.1.1 Set preset , select the position you need to set the preset, press “PRESET” key on the keyboard. It will appear “Set Preset” in the left corner of the image, then input the Preset No., please press “Enter” after input for save.



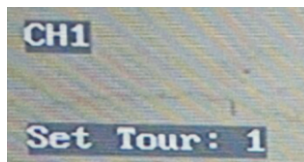
7.1.2 Press “Shot” key, it will appear “Goto Preset” in the left up corner of the image. Then input the Preset No. you need to shot, press “Enter” after the input.



7.2 Patrol set and shot

7.2.1 Setting Patrol

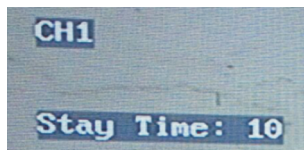
7.2.1.1 When press “PATROL” Key after setting preset, it will appear “ Set Tour” in the left up corner of the image.



7.2.1.2 Input Patrol No., press “Enter” key, it will appear “ Add Preset” in the left corner.



7.2.1.3 Input the desired preset Patrol, then press “Enter” key, it will appear “Stay Time” after in the top left corner.



7.2.1.4 Input the current preset stopping time, press the "Enter" key again after inputting. it will appear "Add preset" in the top left corner, which will return to the step 2.

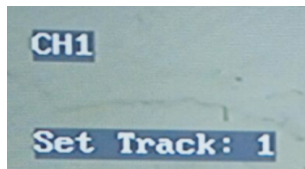
7.2.1.5 Continue to follow steps 2,3,4 after completing to add all the required patrol presets, press the "PATROL" again to save.

7.2.2 tone cruise, pressed on the keyboard "TOUR" button, the screen will appear the upper left corner "Goto Tour" and then enter the cruise number, press the "OK" button

7.3 Pattern settings and Run

7.3.1 setting Pattern

7.3.1.1 Select the required scan image, Press"Pattern", it will appear"Set Track" in the top left of the image.



7.3.1.2 Input the Numbers, Press"Enter" for confirming, it will appear "Recording" in the top left corner.

7.3.1.3 Control the pattern track by operating the joystick, Press" PATTERN " key again for saving.

7.2.2 Run Pattern

Press "RUN" Key, it will appear "Goto Track" in the top left of the image, then input the Pattern No., Press " Enter" key to confirming the Run action.



IP CONTROL KEYBOARD

